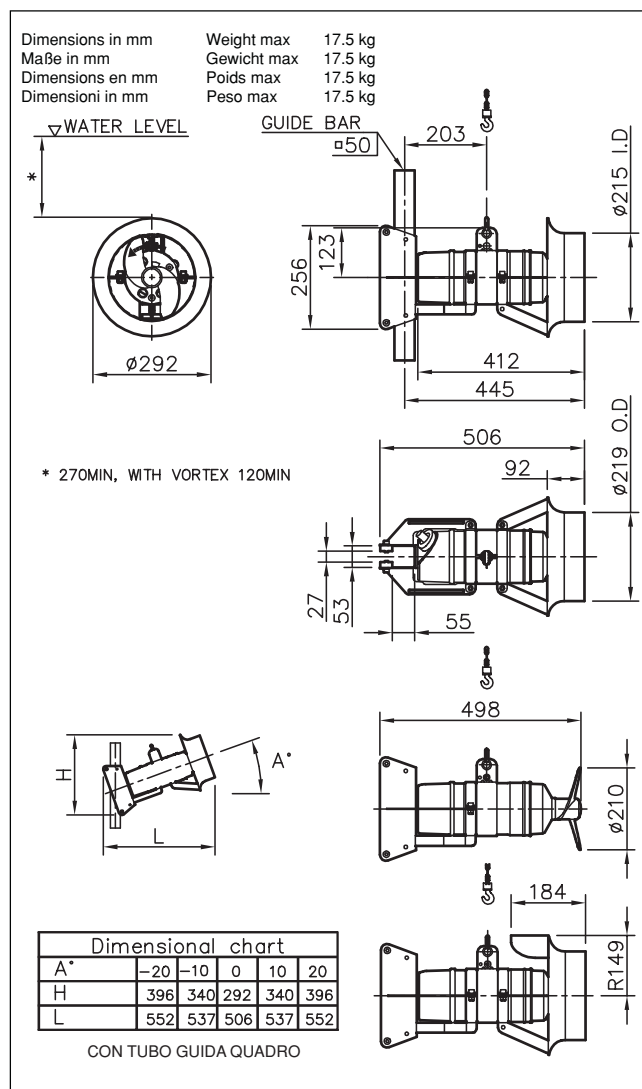
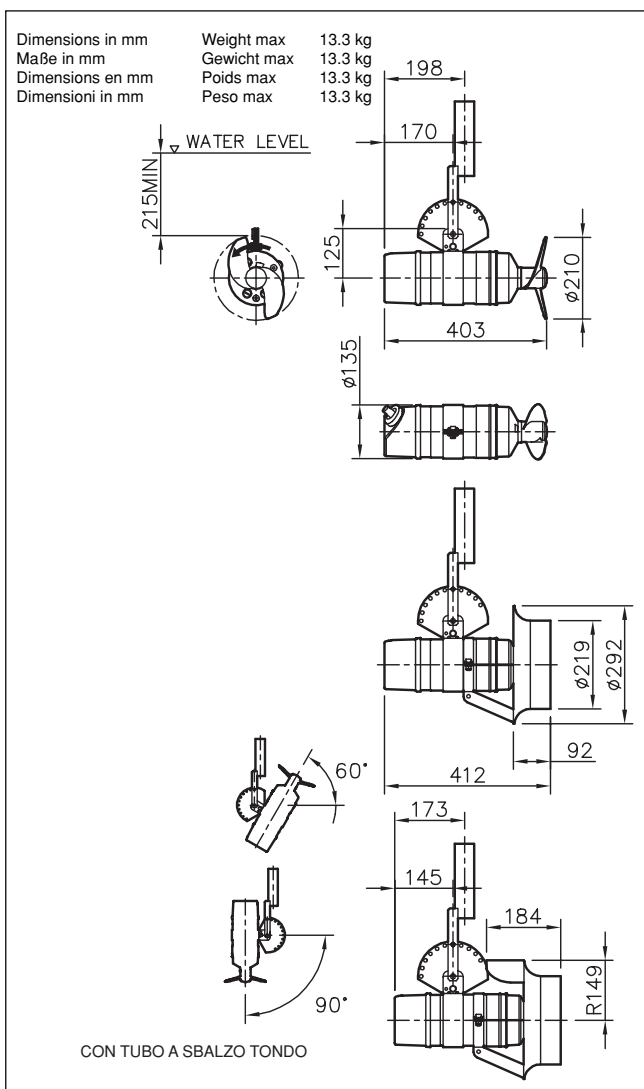


Material Werkstoff Matériaux Materiale	Drive unit and hydraulic end Antriebseinheit und Hydraulikeinheit Moteur et partie hydraulique Gruppo motore e parte idraulica	Propeller also available in: Propeller auch lieferbar in: Hélice également disponible en: Elica disponibile anche in:	O-rings O-Ringe Anneaux toriques Anelli OR	Seal faces (outer) GLRD produktseitig Garniture mécanique extérieure Tenuta esterna
(BS)	970 PART4-1991 (316S33)		NBR or/oder/ou/oppure	WCCR/Al <sub>2</sub> O <sub>3</sub> or/oder/ou/oppure
(DIN)	17440 - (x5Cr Ni Mo 17133)		FPM	RSiC/RSiC or/oder/ou/oppure
(NF)	A 35/Z 6 CND 18-12-03			WCCR/WCCR
(SS)	142343 - 02			
(AISI/ASTM)	ASTM A 320-1982 Type (316)			

Sequence number Laufende Nr. Numéro N° di riferimento	Propeller diameter, nominal (mm) Propellerdurchmesser, nominal (mm) Diamètre nominal du mobile (mm) Diametro nominale elica (mm)	Blade angle Propellerwinkel Angle de pale Inclinazione pale elica	Material Werkstoff Matériaux Materiale	Oil casing Ölgehäuse Bac à huile Sebatoio olio	Shaft Welle Arbre Albero
1	210	09	(BS)	Vinylester, SMC CR30	970: 1413 S 29
2	210	11	(DIN)		X 20 Cr Ni 17 2
3	210	15	(NF)		A 35/Z 15 CN 16.02
4	210	18	(SS)		14 23 21
5	210	05	(AISI/ASTM)		431, UNS/S 43100

Further combinations of material in accordance with the conditions of use\*  
 Weitere Materialkombinationen nach Anwendungsbedingungen  
 Différentes combinaisons de matériaux sur demande  
 Sono disponibili altre combinazioni di materiali





Propeller Propeller Hélice Elica			Motor Motor Moteur Motore																	
Sequence number Número • N° di riferimento	Propeller number N° elica	Propeller-Nr. r/min	Rated power Potenza meccanica nominale P <sub>M</sub> (kW)	Max. temperature Max. temperatura	Standard IP 68	Type of approval according to Schutzart nach d'II BT 4; IP 68	IEC 529 EN 50014 secondo norme	Rated current Intensità nominale Assorbimento nominale	Rated current 230 V	Power factor COS φ	400 V	(A)	Motor efficiency Rendimento motore cos φ (400 V)	Starting surge Anlaufstrom de démarrage d'avviamento	230 V	Starting surge 400 V	(A)	Thermal control Therm. Wirkungschutz Controllo temperatura	Standard	Leakage control Defecteur d'infiltrations Controllo infiltrazione
230 V, 50 Hz, 3 ~ / 400 V, 50 Hz, 3 ~																				
1	042109xx	1350	1.5	40	●			6.3	3.6	0.86		69.5	24	-	14	-	●			
2	042111xx	1350	1.5	40	●			6.3	3.6	0.86		69.5	24	-	14	-	●			
3	042115xx	1350	1.5	40	●			6.3	3.6	0.86		69.5	24	-	14	-	●			
4	042118xx	1350	1.5	40	●			6.3	3.6	0.86		69.5	24	-	14	-	●			
1	042109xx	1350	1.5	70	●			6.3	3.6	0.86		69.5	24	-	14	-				
2	042111xx	1350	1.5	70	●			6.3	3.6	0.86		69.5	24	-	14	-				
3	042115xx	1350	1.5	70	●			6.3	3.6	0.86		69.5	24	-	14	-				
4	042118xx	1350	1.5	70	●			6.3	3.6	0.86		69.5	24	-	14	-				
1	042109xx	1350	1.35 <sup>1)</sup>	90	●			5.5	3.2	0.85		71	24	-	14	-				
2	042111xx	1350	1.35 <sup>1)</sup>	90	●			5.5	3.2	0.85		71	24	-	14	-				
3	042115xx	1350	1.35 <sup>1)</sup>	90	●			5.5	3.2	0.85		71	24	-	14	-				
4	042118SJ	1350	1.35 <sup>1)</sup>	90	●			5.5	3.2	0.85		71	24	-	14	-				
230 V, 50 Hz, 1 ~																				
5	042105xx	1430	0.75	40	●			4.9	-	0.95		68	23	-	-	-	●			
1	042109xx	1430	0.75	40	●			4.9	-	0.95		68	23	-	-	-	●			
2	042111xx	1430	0.75	40	●			4.9	-	0.95		68	23	-	-	-	●			
5	042105xx	1430	0.75	70	●			5.0	-	0.95		68	23	-	-	-				
1	042109xx	1430	0.75	70	●			5.0	-	0.95		68	23	-	-	-				
2	042111xx	1430	0.75	70	●			5.0	-	0.95		68	23	-	-	-				
5	042105xx	1430	0.75	90	●			5.0	-	0.95		68	23	-	-	-				
1	042109xx	1430	0.75	90	●			5.0	-	0.95		68	23	-	-	-				
2	042111xx	1430	0.75	90	●			5.0	-	0.95		68	23	-	-	-				

xx = SJ/SF

<sup>1)</sup> Limited rated power

<sup>1)</sup> Motornennleistung begrenzt

<sup>1)</sup> Puissance absorbée limitée

<sup>1)</sup> Potenza resa limitata